

Photron

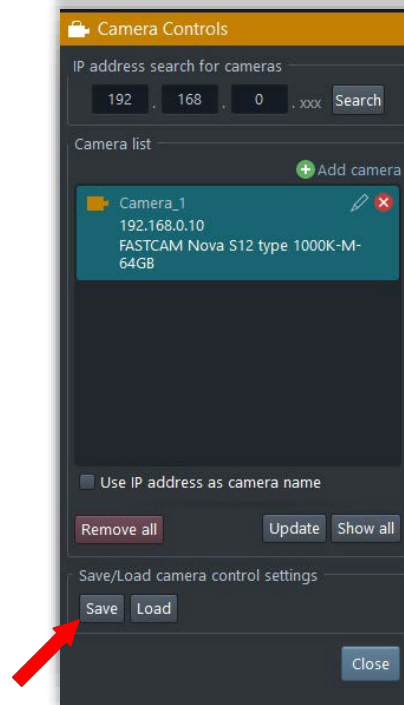
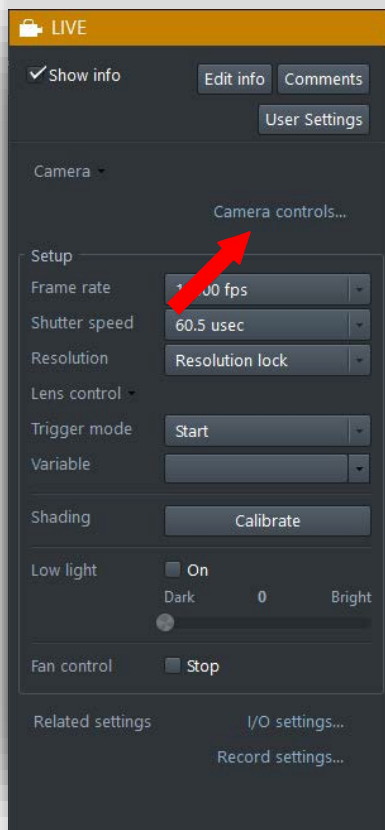
MONTHLY TECH TIPS WITH MIKE



Topic: Saving a camera's settings

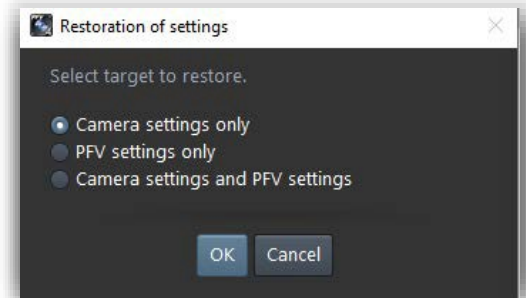
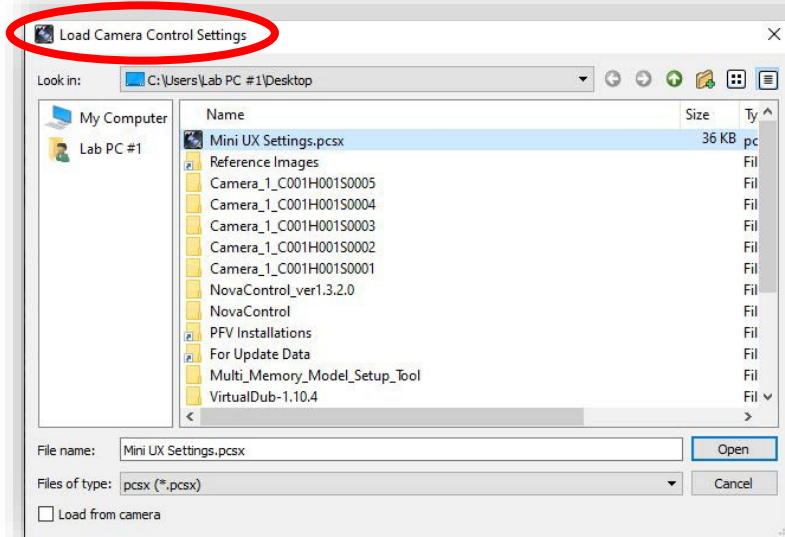
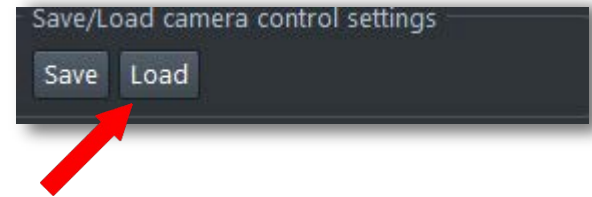
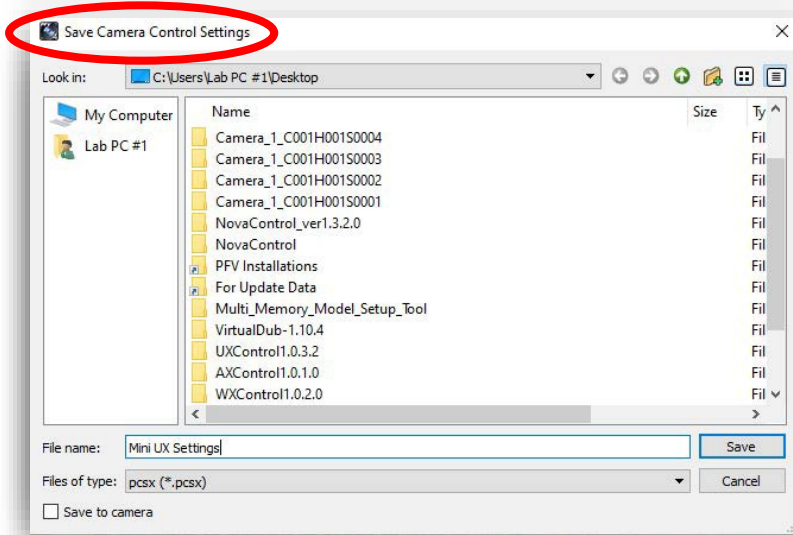
When configuring a Photron camera for a particular setup or test, there are two ways to save the desired settings, so they are conveniently accessible. The settings can either be saved in a PCSX (Photron Camera Settings) file and saved to the PC or the camera settings can be saved in the camera.

Open the PFV4 software and look for the "Camera controls..." button on the right-hand side of your screen. Select it and look for the "Save/Load camera control settings" section.



1) Creating and loading a PCSX file

The PCSX file will save both the PFV and camera settings. You will be prompted to name the PCSX file and save it in your directory of choice. When you want to load the PFV and camera settings, simply click "Load" instead of "Save" in the camera control section. You will be prompted to either load just your PFV4 settings (i.e. LUT settings, measurement calibrations, etc.), just your camera settings (i.e. frame rate, shutter speed, etc.), or both. The process is pictured below.



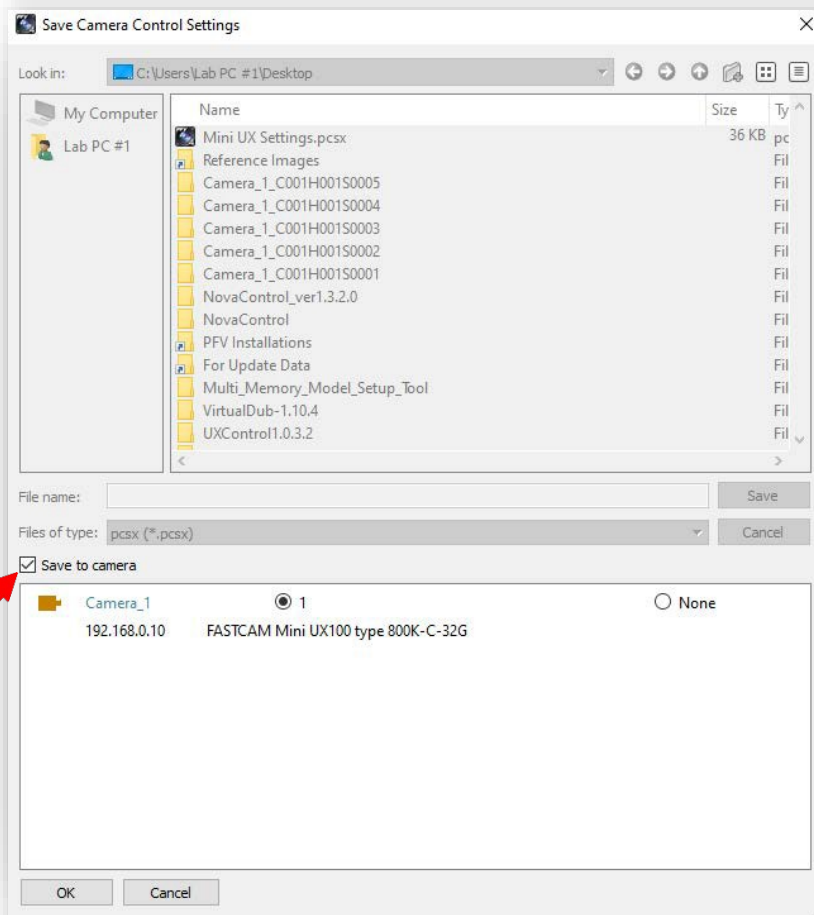
Please note that PCSX files should only be used for the same models of cameras. A PCSX files created using a FASTCAM Nova will not work with a FASTCAM Mini UX and vice versa.



2) Saving settings to a camera

There is also the option to save settings such as frame rate, shutter speed, and resolution to a camera. This can be useful if you have a configuration of settings that you most commonly use. Once saved, the camera will always boot up with these settings. Cameras that allow you to save multiple configurations always boot up in configuration #1.

Navigate to "Save/Load camera control settings" and click on "Save". Instead of saving a PCSX file to a directory, the user will check the "Save to camera" box and all cameras currently connected to PFV4 will be listed below. Select the camera you are interested in saving the settings for and click "OK". The settings are now saved to that camera and will be preserved across multiple PC setups.



We hope this tech tip was helpful and if you have any questions or comments please contact us:

Call: toll free at 800.585.2129 or 858.684.3555

E-mail: Mestela@photron.com or Skirksey@photron.com