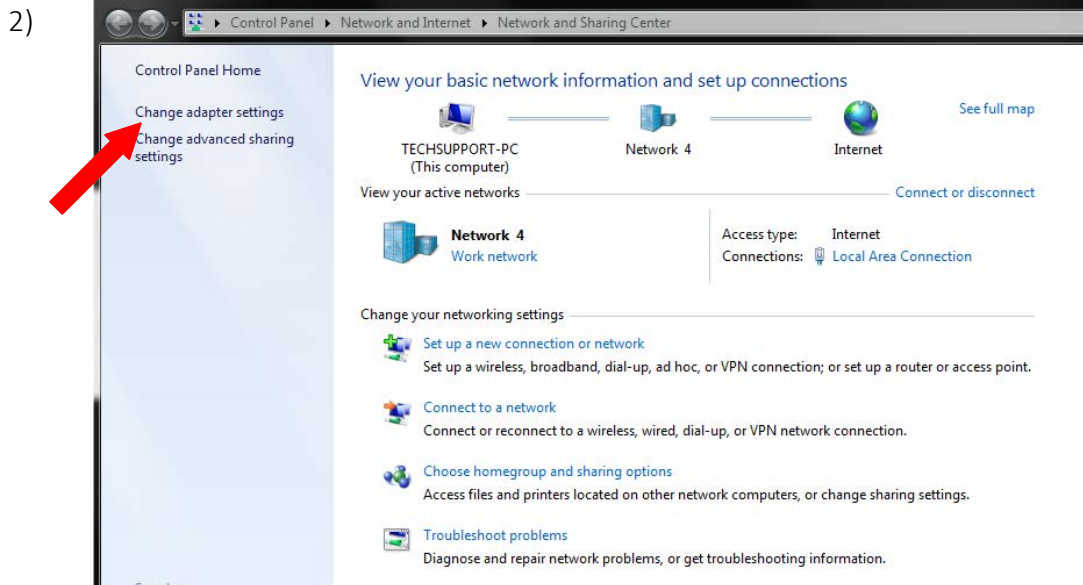
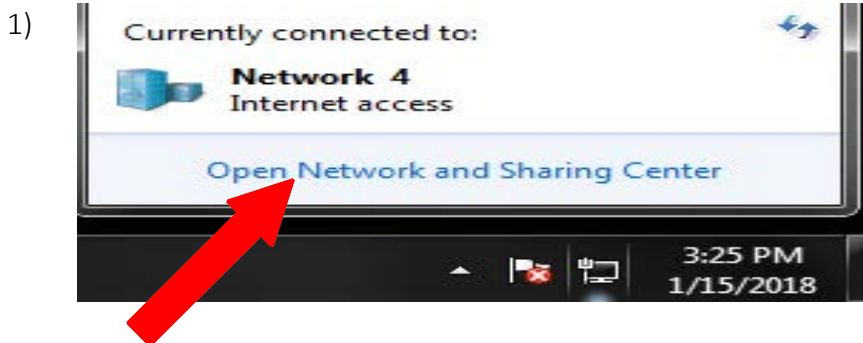




Optimizing mobile Intel network adapters for Windows 7

The Intel mobile i21 series of network adapters has issues communicating properly with Photron cameras if the Intel driver is out of date. Please ensure if you have an Intel adapter that starts with i21 you upgrade to the latest driver version. The latest version for windows 7 can be found by following this link: <https://downloadcenter.intel.com/download/18713/Ethernet-Intel-Network-Adapter-Driver-for-Windows-7> (This download is an auto install executable file)

- 1) To check your network adapter simply click on your ethernet or wifi icon in the bottom right of the task bar and select "Open Network and Sharing Center".
- 2) The network settings window will open up and the user can select "Change adapter settings" to open up their list of adapters.





3) Select the currently used adapter and right click and select properties. The name will be displayed in the box that says "Connect using:".

3)

